

ELL Antibody (C-term)
Affinity Purified Rabbit Polyclonal Antibody (Pab)
Catalog # AP9479b**Specification**

ELL Antibody (C-term) - Product Information

Application	WB,E
Primary Accession	P55199
Reactivity	Human, Mouse
Host	Rabbit
Clonality	Polyclonal
Isotype	Rabbit IgG
Calculated MW	68265
Antigen Region	516-545

ELL Antibody (C-term) - Additional Information**Gene ID** 8178**Other Names**

RNA polymerase II elongation factor ELL, Eleven-nineteen lysine-rich leukemia protein, ELL, C19orf17

Target/Specificity

This ELL antibody is generated from rabbits immunized with a KLH conjugated synthetic peptide between 516-545 amino acids from the C-terminal region of human ELL.

Dilution

WB~~1:1000

E~~Use at an assay dependent concentration.

Format

Purified polyclonal antibody supplied in PBS with 0.09% (W/V) sodium azide. This antibody is purified through a protein A column, followed by peptide affinity purification.

Storage

Maintain refrigerated at 2-8°C for up to 2 weeks. For long term storage store at -20°C in small aliquots to prevent freeze-thaw cycles.

Precautions

ELL Antibody (C-term) is for research use only and not for use in diagnostic or therapeutic procedures.

ELL Antibody (C-term) - Protein Information**Name** ELL**Synonyms** C19orf17

Function Elongation factor component of the super elongation complex (SEC), a complex required to increase the catalytic rate of RNA polymerase II transcription by suppressing transient pausing by the polymerase at multiple sites along the DNA. Elongation factor component of the little elongation complex (LEC), a complex required to regulate small nuclear RNA (snRNA) gene transcription by RNA polymerase II and III (PubMed:[22195968](#), PubMed:[23932780](#)). Specifically required for stimulating the elongation step of RNA polymerase II- and III-dependent snRNA gene transcription (PubMed:[23932780](#)). ELL also plays an early role before its assembly into the SEC complex by stabilizing RNA polymerase II recruitment/initiation and entry into the pause site. Required to stabilize the pre-initiation complex and early elongation.

Cellular Location

Nucleus. Nucleus speckle. Nucleus, Cajal body. Note=Colocalizes with EAF2 to nuclear speckles (PubMed:12446457). Colocalizes with coilin in subnuclear cajal and histone locus bodies (PubMed:12686606). Translocates in the LEC complex to cajal and histone locus bodies at snRNA genes in a ICE1- dependent manner. Associates to transcriptionally active chromatin at snRNA genes (PubMed:23932780).

Tissue Location

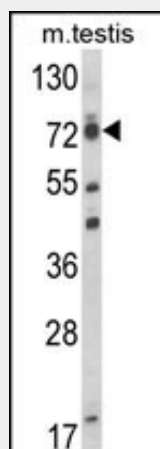
Expressed in all tissues tested. Highest levels found in placenta, skeletal muscle, testis and peripheral blood leukocytes

ELL Antibody (C-term) - Protocols

Provided below are standard protocols that you may find useful for product applications.

- [Western Blot](#)
- [Blocking Peptides](#)
- [Dot Blot](#)
- [Immunohistochemistry](#)
- [Immunofluorescence](#)
- [Immunoprecipitation](#)
- [Flow Cytometry](#)
- [Cell Culture](#)

ELL Antibody (C-term) - Images



Western blot analysis of ELL Antibody (C-term) (Cat. #AP9479b) in mouse testis tissue lysates (35ug/lane). ELL (arrow) was detected using the purified Pab.

ELL Antibody (C-term) - Background

Elongation factor that can increase the catalytic rate of RNA polymerase II transcription by suppressing transient pausing by the polymerase at multiple sites along the DNA.

ELL Antibody (C-term) - References

?Zhou, J., et al. J. Biol. Chem. 284(28):19142-19152(2009)

?Jiang, F., et al. Cancer Lett. 253(2):265-272(2007)

?Matsuoka, S., et al. Science 316(5828):1160-1166(2007)